

# METALCONSTRUCT

## Manufacturer of aluminium products since 1951

**ESTABLISHED IN 1951**

**Our market**

The 80% of our income is export sales

- Norway
- Sweden
- Denmark
- Germany
- Netherlands
- Austria
- Slovakia
- Romania



### CONSTRUCTION PRODUCTS

### ALUMINIUM SCAFFOLDING SYSTEMS

#### SERVICE

#### STAND FOR FRUIT-PICKING

### ALUMINIUM BOXES

#### STANDARD

#### SPECIAL

### OTHER PRODUCTS

#### FLOWER STAND

#### COLLAPSIBLE WORKBENCH

#### PARKING PROTECTORS

#### FRIDGE TRAY

#### SOLAR COLLECTORS

#### BICYCLE TRAILER

**2016 - The implementation of the machine purchasing EU tender**

### QUALITY

GE QUALITY MANAGEMENT SYSTEM CERTIFICATE

ISO 9001:2015

GE QUALITY MANAGEMENT SYSTEM CERTIFICATE

### PRODUCTS FOR LOGISTICS AND EVENTS

#### PALLETS

#### TENT FRAMES

#### OTHER

### MANUFACTURING

**RAW MATERIAL ALUMINIUM**

### MANUFACTURING PROCESSES

### 2018 - Aluminium die casting investment

GNOP-1.3.3-16-2018-DG050 tender. Supporting of micro small and medium sized enterprises. Implementation of a modernity of die-casting at Magyar-sál RT.

### SPORT SUPPORT

Magyar Racing Team

Talmácsi Group

### PARTNERS

ESPELCO 35

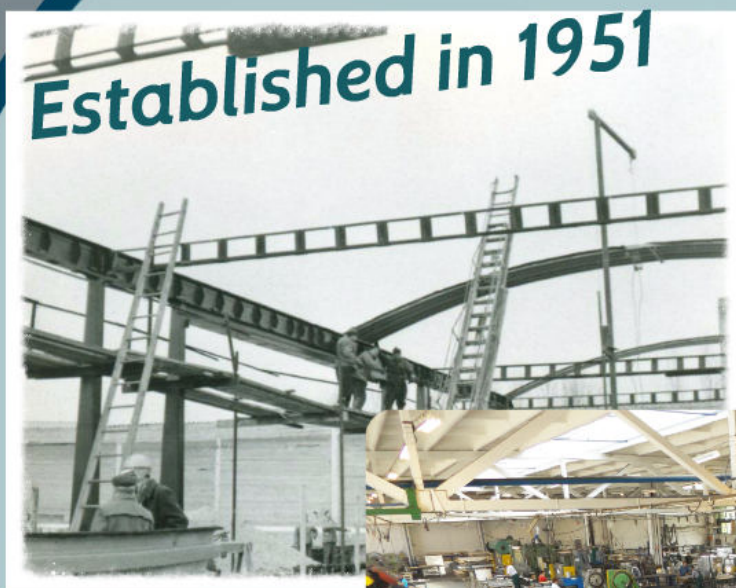
METALCONSTRUCT

**Thank you for your attention!**

Magyarország, Ért. HUNGÁRY  
 6000 Békéscsaba, Füzfa köz 3  
 Telefon: +3636 482 125  
 Fax: +3636 481 4008  
 www.metalconstruct.hu



# METALCONSTRUCT





**Metalconstruct is an aluminium manufacturer company. Arago Zrt. is the owner, that is one of the 10 biggest major investors of the country. It consists of 153 different companies mainly in the agricultural, hotel, metal, miner and food industry.**



# Our market

The 80 % of our income is export sales



A map of Europe is shown with several countries highlighted in a darker shade of blue. The highlighted countries are Sweden, Norway, Denmark, Germany, Netherlands, Austria, Slovakia, and Romania. The text labels for these countries are placed over their respective geographical locations on the map.

Sweden  
Norway  
Denmark Germany  
Netherlands Austria Slovakia  
Romania



# MANUFACTURING

## RAW MATERIAL

# ALUMINIUM

- ALUMINIUM ROLLED PLATE
- ALUMINIUM ALLOYED TEAR-DROP PLATE
- ALUMINIUM EXTRUDED PROFILE
- ALUMINIUM EXTRUDED PROFILE
- ALUMINIUM CUSTOMIZED PROFILE
- OTHER PARTS

**WHY DO WE USE ALUMINIUM?**

light-weight	hygienic
recyclable	easy to clean
long term maintenance	aesthetic



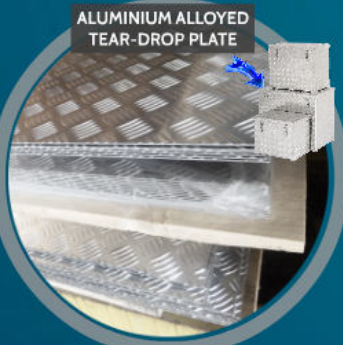
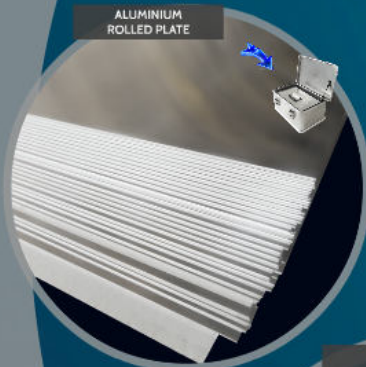
## MANUFACTURING PROCESSES

- Machining of aluminium profiles, sheets and manufacturing of structures
- Heat treatment
- Aluminium welding TIG, MIG
- Designing and manufacturing special prototypes
- Surface treatment outsourced
- Aluminium tube drawing



# RAW MATERIAL

# ALUMINIUM



**WHY DO WE USE ALUMINIUM?**

- light-weight
- weather resistant
- long-term investment
- aesthetic
- hygienic
- easy to clean
- corrosion resistant
- recyclable





# WHY DO WE USE ALUMINIUM?



light-weight

hygienic

weather resistant

easy to clean

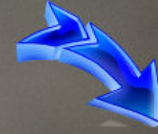
corrosion resistant

long-term investment

recyclable

aesthetic

# ALUMINIUM ROLLED PLATE





# ALUMINIUM ALLOYED TEAR-DROP PLATE



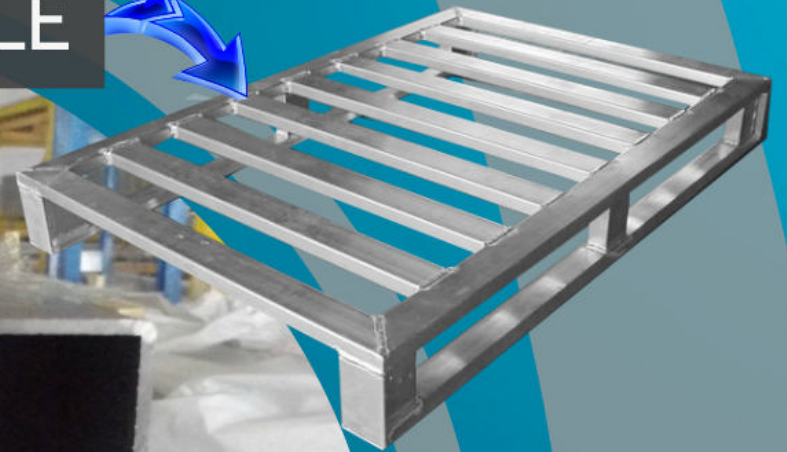
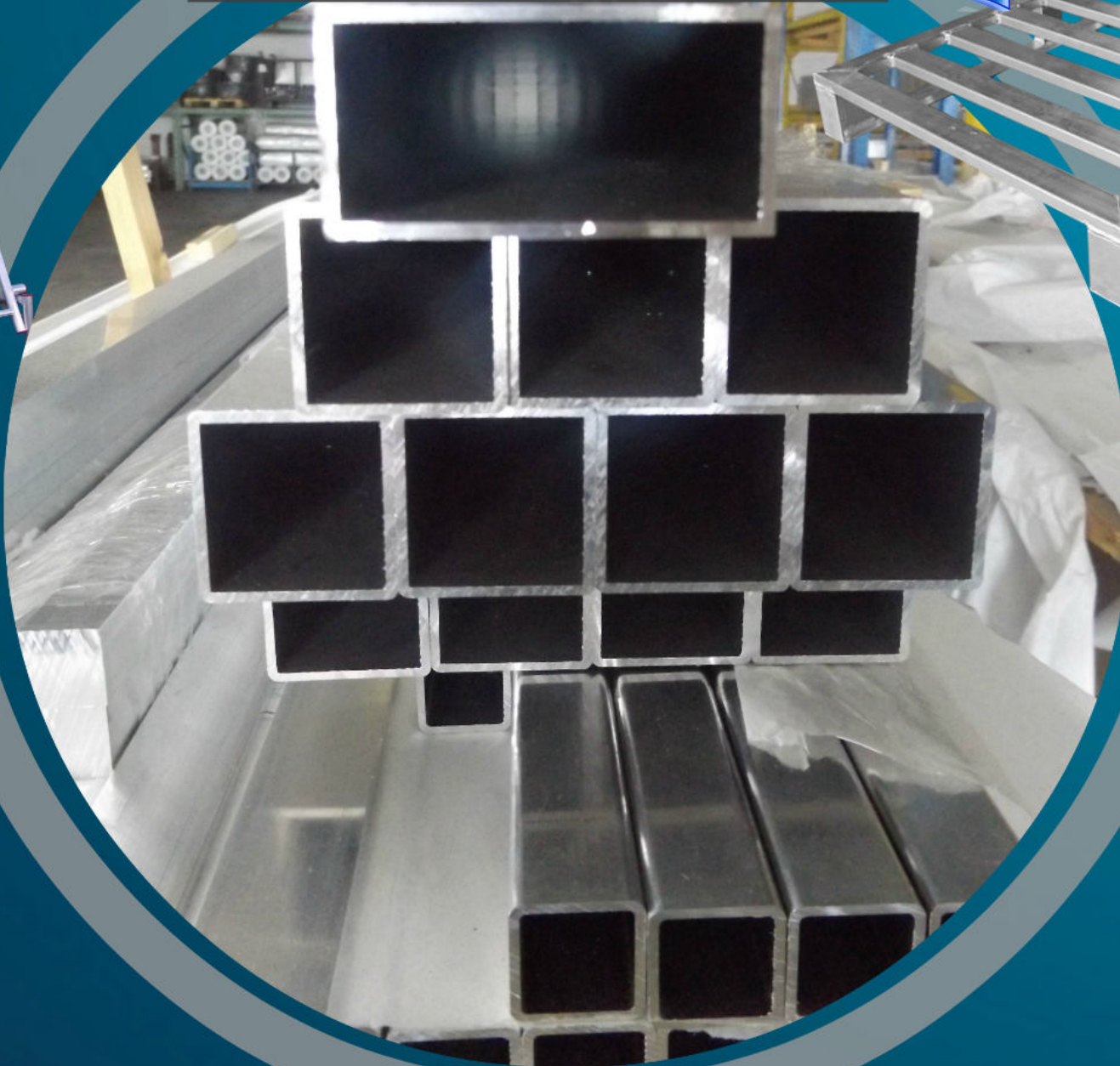


# ALUMINIUM EXTRUDED PROFILE





# ALUMINIUM EXTRUDED PROFILE



# ALUMINIUM CUSTOMSIZED PROFILE



WHY DO WE USE



# OTHER PARTS



ALUMINIUM?

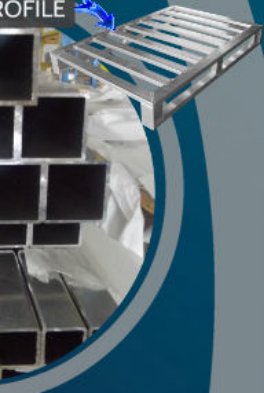
light-weight  
Prezi  
hygienic  
corrosion-resistant



# MANUFACTURING



M  
PROFILE





# MANUFACTURING PROCESSES





# Machining of aluminium profiles, sheets and manufacturing of structures





# Aluminium welding TIG, MIG



# Heat treatment



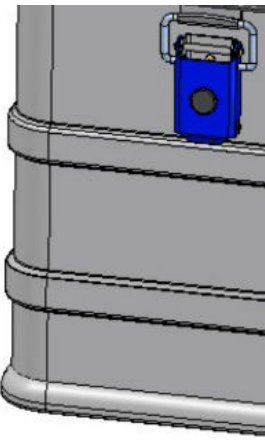


# Surface treatment outsourced





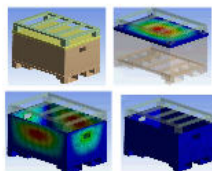
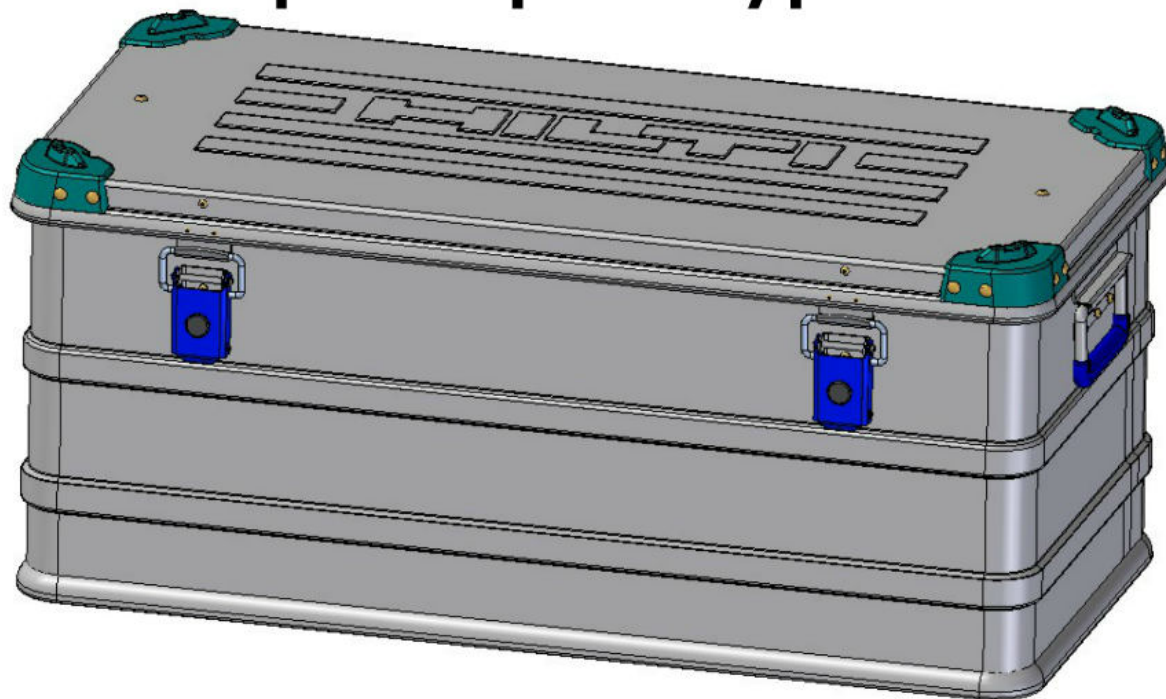
atment  
ced



Aluminium  
tube drawing

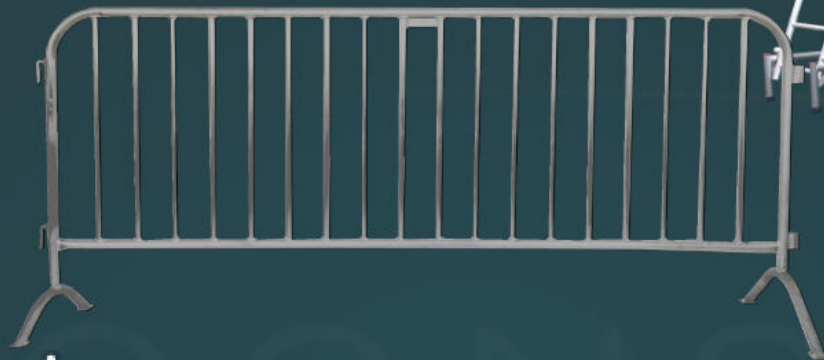


# Designing and manufacturing special prototypes





# CONSTRUCTION PRODUCTS



# ALUMINIUM BOXES

## STANDARD



## SPECIAL





# STANDARD



2 in 1 box set



# STANDARD TYPES

A



C



B



D



WELDED, QUINT BOXES





# SPECIAL

Boxes made for jeeps



Shredder



Extra size boxes



Military boxes



Boxes for motorcycles



Tray made for Mercedes-Benz factory



Mercedes-Benz

Airbus container



Mobile kitchen



Special box made for Landrovers



# Military boxes





# Shredder



# Extra size boxes





# Boxes made for jeeps



Tray made for  
Mercedes-Benz factory



Mercedes-Benz



# Boxes for motorcycles



Tr  
Merced



Airb  
cont





# Special box made for Landrovers





# Airbus container



# ALUMINIUM SCAFFOLDING SYSTEMS

## SERVICE



We also manufacture customized racks



## STAND FOR FRUIT-PICKING



Stackable



Collapsible



Podium



# SERVICE



We also manufacture customized racks



# STAND FOR FRUIT-PICKING



Stackable



Collapsible



Podium





# Stackable





**Collapsible**





# Podium



# PRODUCTS FOR LOGISTICS AND EVENTS

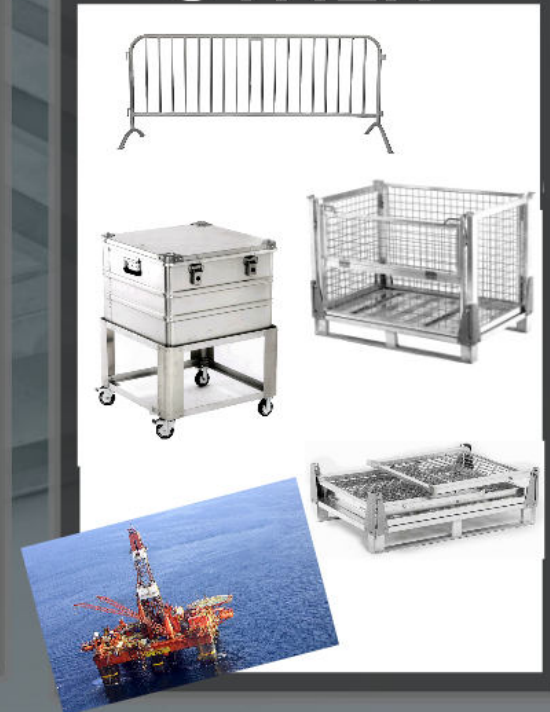
## PALLETS



## TENT FRAMES



## OTHER





# OTHER PRODUCTS

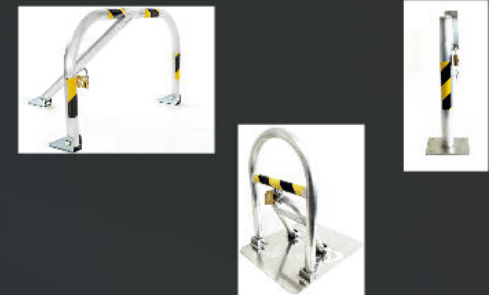
**FLOWER STAND**



**COLLAPSIBLE  
WORKBENCH**



**PARKING  
PROTECTORS**



**FRIDGE TRAY**



**SOLAR COLLECTORS**



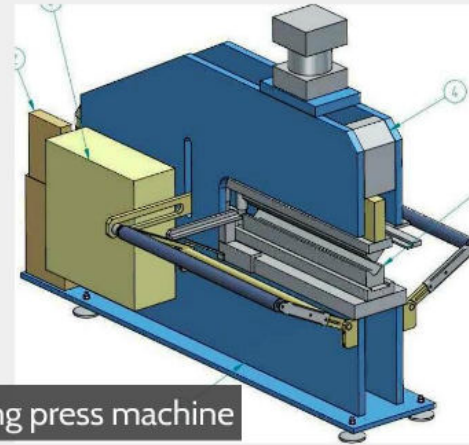
**BICYCLE TRAILER**



# 2016 - The implementation of the machine purchasing EU tender



DW50NCBL  
tube bending machine



bending press machine



HACO Atlantic ATP 32135 CNC  
bending machine



HELI CPCD25  
wheel counterbalanced truck



HACO NV combi 220-6  
corner notching machine



HACO HSL 3006 NC  
plate shears

Baumann  
HX40-12-40  
SIDELOADER



Masterplat  
wrapping machine



MIGATRONIC welding machines



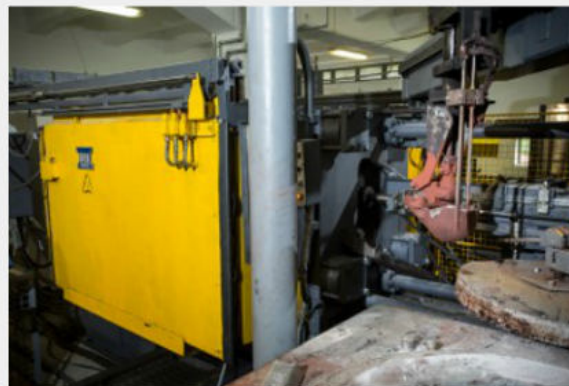


# 2018 - Aluminium die casting investment

GINOP-1.3.3-16-2018-00050 tender: Supporting of micro, small and medium sized enterprises  
Implementation of a new activity of die casting at Mátrametál Kft.

## Matrametal Ltd - Die casting factory - Machines

- Idra 420 - cold chamber horizontal automatic diecasting machine. Column spacing: 620 x 620 mm
- Idra 700 - cold chamber horizontal automatic casting machine. Column spacing: 760 x 760 mm
- Chiron FZ12W- 4-axis, 2-palette CNC machining center
- 2 pcs hydraulic presses 20T and 30T
- RÖSLER RM600 rotary vibrator
- Blasting machine, OTECO OPTIMA Junior 10-14
- Melting & holding 1.
  - Melting: NABERTherm 700, Tilting crucible, natural gas-heated furnace - 700 kg/hour
  - Holding: KROWN KM 650 dosing furnace - 650 kg
- Melting & holding 2.
  - HOVEN CESANA Electric melting furnace
  - Holding: 600 kg
  - Melting: 150 kg/h



## Matrametal Ltd. - First Projects

DAB Casting and machining of pump housings and motor cases - 100.000 pc/year



## Vehicle Ltd - railway carriage components



## Mold casting



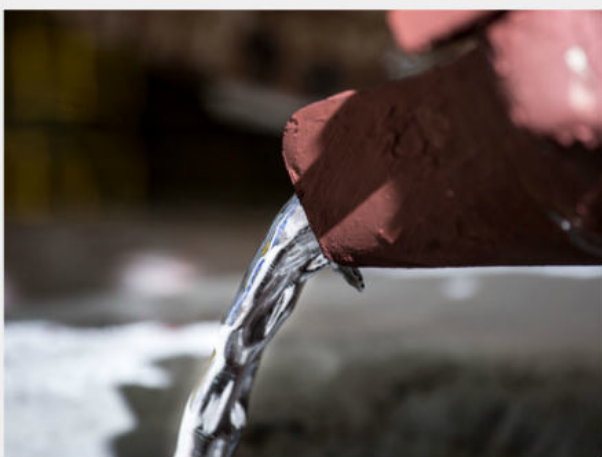
## Metalconstruct Ltd. - Matrametal Ltd. - Collective Project

- 1200 sqm hall with 5 automatic casting cells
  - Idra 420
  - Idra 560
  - Idra 700
  - + 2 existing
    - Idra 420
    - Idra 700
- 2 pcs Quaser MV 154 machining centers
- 1x Chiron FZ12W CNC machining centers
- Melting shaft furnace: KROWN KTF 1500/750
- Rotary vibrator: EVP-RA 1700
- Measuring instruments: Mitutoyo 3D
- Bridge crane: 5 t

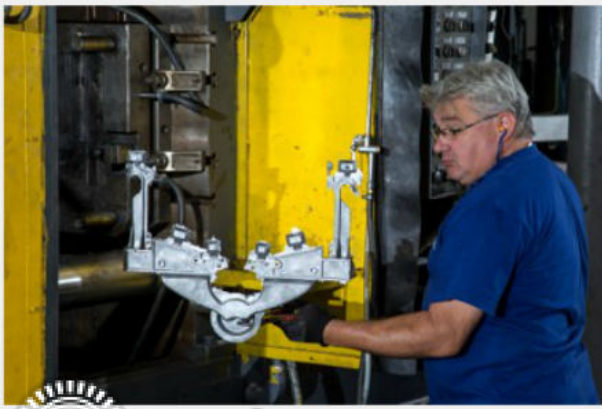


# Matrametal Ltd. – First Projects

DAB Casting and machining of pump housings and motor cases – 100.000 pc/year



# Vehicle Ltd – railway carriage components



# Mold casting





## Metalconstruct Ltd. - Matrametal Ltd. - Collective Project

- 1200 sqm hall with 5 automatic casting cells
  - Idra 420
  - Idra 560
  - Idra 700
  - + a 2 existing
    - Idra 420
    - Idra 700
- 2 pcs Quaser MV 154 machining centers
- 1x Chiron FZ12W CNC machining centers
- Melting shaft furnace: KROWN KTF 1500/750
- Rotary vibrator: EVP-RA 1700
- Measuring instruments: Mitutoyo 3D
- Bridge crane: 5 t



# QUALITY

## QUALITY MANAGEMENT SYSTEM CERTIFICATE

We hereby certify that

### **MetALconstruct Zrt.**

*Headquarters: H-6000 Kecskemét, Fűzfűs köz 3.*

the company has introduced and applied  
a Quality Management System, which satisfies  
the requirements of

### **MSZ EN ISO 9001:2009**

standard in the following fields:

**Production of Aluminium Construction Boxes, Stands,  
Logistics Assets (containers, pallets, etc.),  
Tent Frames, Drawn Tubes Products.**

Expiry date: 03<sup>th</sup> October 2018

Certificate registration No.: 01-T1651/2015-01161

Szeged, 04<sup>th</sup> October 2015

*Gondli László Károl*  
KONFORMITAS Certifying Ltd.





# SPORT SUPPORT



Magyar Racing Team



Talmácsi Group

## PARTNERS



Mercedes-Benz



ESPENES a.s

**1ALMÁCSI**

FAESGROUP



METALCONSTRUCT

***Thank you for your attention!***

Metalconstruct Zrt.

HUNGARY

6000 Kecskemét, Fűzfás köz 3.

Telefon: +3676 482 233

Fax: +3676 481 408

[www.metalconstruct.hu](http://www.metalconstruct.hu)